

ART CLUB AT IZIKO

LEARNER SUPPORT: ART

This resource aims to guide learners and parents/teachers through weekly activities which require simple art making materials and recycled materials. The activity is suitable for children with any level of exposure and ability in art.

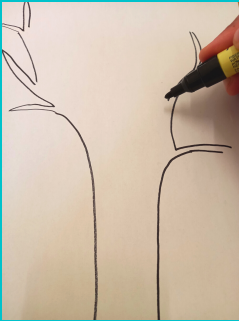


WHAT YOU'LL NEED

- A3 paper
- Oil Pastels
- markers
- Water colours /paint
- pencil

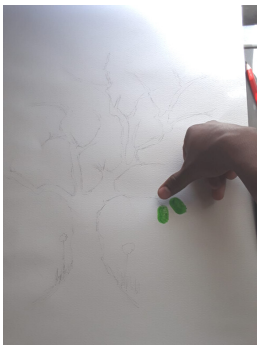
Family Tree Print

STEP 1



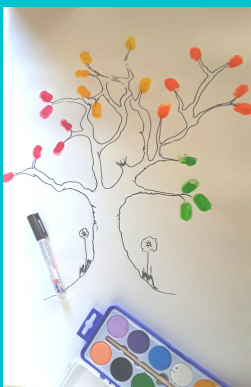
Use a crayon/marker and draw an outline of your tree.

STEP 2



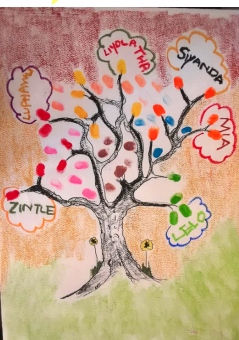
Once your tree has been outlined you can then move on to the 'finger print leaves' for your tree.

STEP 3



You can use acrylic paint/compressed powder paint palette to create your leaves. If you're using a powder paint compressed palette you'll wet your finger and then press it into the colour you want. Similar to using your finger as a stamp.

STEP 4



If you would like to make your tree more personal you can add the names of family and friends to your tree. The names can be written in the 'finger print leaf' or around the leaves and branches.

Draw a background for your tree. You could draw a forest, fields of flowers, anything in nature that you feel could make a beautiful background.